

# Community fire information update

Katanning Bushfire, 10 February 2020, 1500hrs

**The Katanning Bushfire started on Friday 7 February 2020. The fire is currently stationary and controlled however not yet contained and has burnt approximately 4002 hectares, with a perimeter of 46.8km.**

## Weather outlook and bushfire risk for Monday 10 February 2020.

- Weather conditions fresh to east to south east winds today, maximum temperature of 27, with a slight chance of showers on Tuesday morning.
- For more weather information go to Bureau of Meteorology website: [www.bom.gov.au](http://www.bom.gov.au)

## Current situation and what fire-fighters are doing

Firefighters are actively strengthening containment lines, mopping up, and burning out unburnt pockets, including a five hectare pocket this afternoon in the vicinity of Young Road and the Katanning-Dumbleyung Road; as a result there may be some smoke around the fire area, later this afternoon. 130 farmer response Bush Firefighters, Volunteer Fire and Rescue Service, State Emergency Service, Department of Biodiversity and Conservation and Attractions firefighters are continuing their tireless work to manage and secure the fire ground.

## Other Assistance

Parks and Wildlife service, Water Corporation, Western Power, Main Roads, Western Australian Police Service, ARC Infrastructure and the Shires of Katanning and Woodanilling, were also providing essential support to the firefighting effort and to support communities impacted.

## Fire Status

- The fire has burnt approximately 4002 Hectares.
- During mopping up activities we have a revised perimeter of 46.8km.
- The fire is currently stationary and controlled however not yet contained.

## Community Assets Threatened or Impacted

- One house has been lost and two houses have sustained damage. Approximately 80km of perimeter rural fencing and several outbuildings have also been lost.

## Livestock Information

- At this stage the Department of Primary industries and Regional Development are working with local farmers and Shires to confirm stock losses

## Road Closures

Avoid the area and be aware of fire and emergency services personnel working on site.

A number of roads have been closed including:

- Great Southern Highway between Katanning and Robinson Road
- Trimmer Road between Shenton Road and Great Southern Highway
- parts of Katanning-Dumbleyung Road
- Climie Road and Forrest Hill Road

The following roads have reopened:

- Great Southern Highway between Broomehill townsite and Katanning
- Kojonup-Katanning Road between Great Southern Highway and Albany Highway
- Katanning-Dumbleyung Road from Katanning townsite to Young Road is open to local traffic only
- Henry Street

Motorists are asked to reduce speed and drive carefully due to smoke.

Road information may also be available from Main Roads WA by calling 138 138 or visiting [travelmap.mainroads.wa.gov.au](http://travelmap.mainroads.wa.gov.au) or by contacting the Shire of Katanning.

# Community fire information update

## Current Warnings

**ADVICE** has been issued for people in or near the townsite of Katanning including an area bounded by Robinson Road, Cornwall Road, Onslow Road, Maracoonda Road, Hutton Road, Kojonup-Katanning Road, Warren Road, Withers Road, Kelly Road and Robinson Road in the SHIRES OF KATANNING and WOODANILLING.

## Community support

- The Disaster Response Hotline has been opened to receive calls for assistance.
- **The Disaster Response Hotline number is 1800 032 965.**

## Stay Up to Date

- DFES information line 13DFES (133 337)
- Emergency WA Website: [www.emergency.wa.gov.au](http://www.emergency.wa.gov.au)
- ABC Local Radio

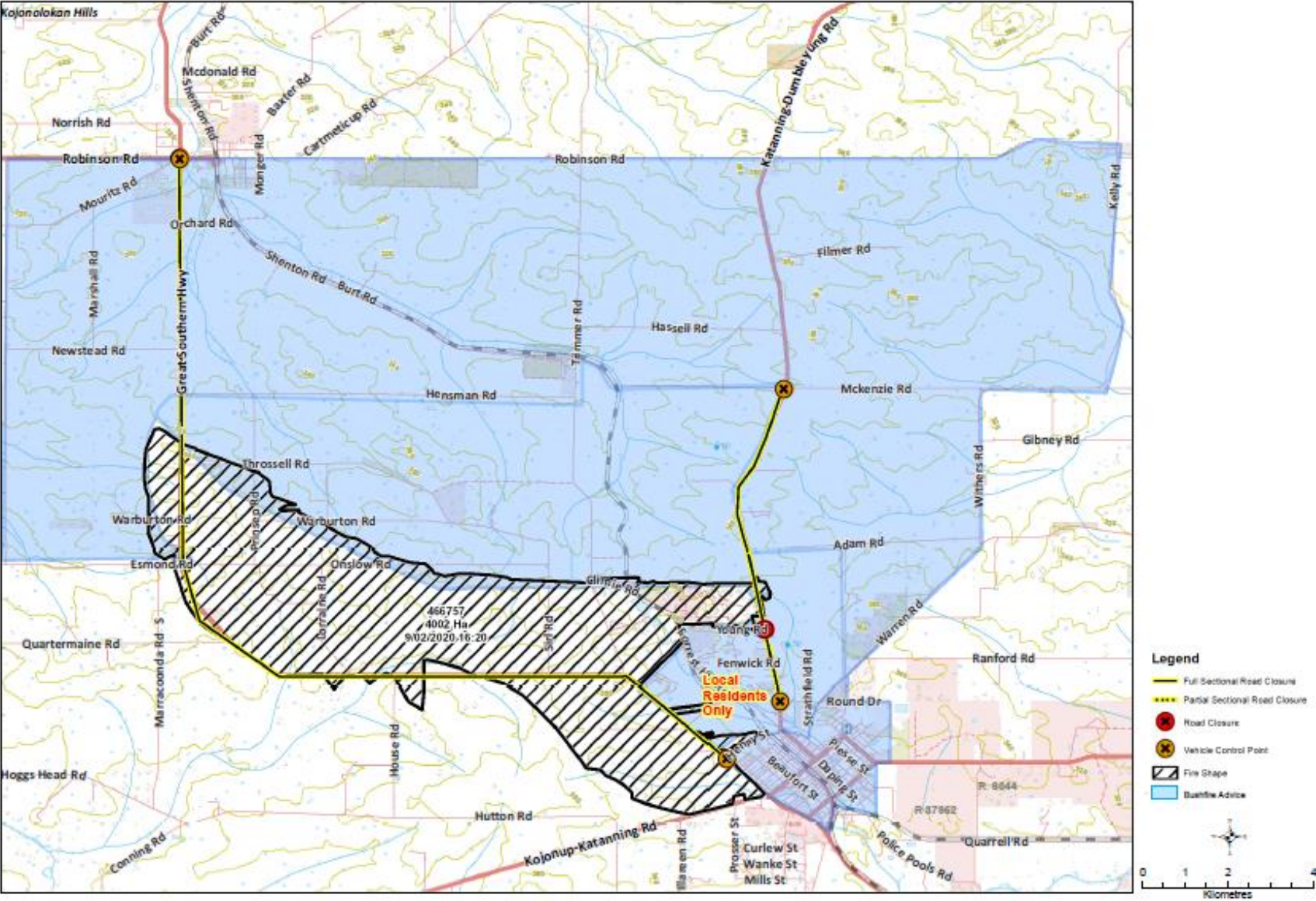


Bunbury crews mopping up along Great Southern Highway. (Photo credit Heather McNamara)



# Community fire information update

KATANNING BUSHFIRE 466757 - 10 FEBRUARY 2020





# Community fire information update



Smouldering trees in paddock (Photo credit Heather McNamara)



Fallen trees alongside Great Southern Highway (Photo credit Heather McNamara)



Community Meeting at Woodanilling (Photo credit Terry Shehan)