



Building



Healthy



Communities



Linking



Assets

## Working Together for Better Health, Katanning

Laying the foundation for supporting people  
across their whole of health journey and to  
stay well within their community.

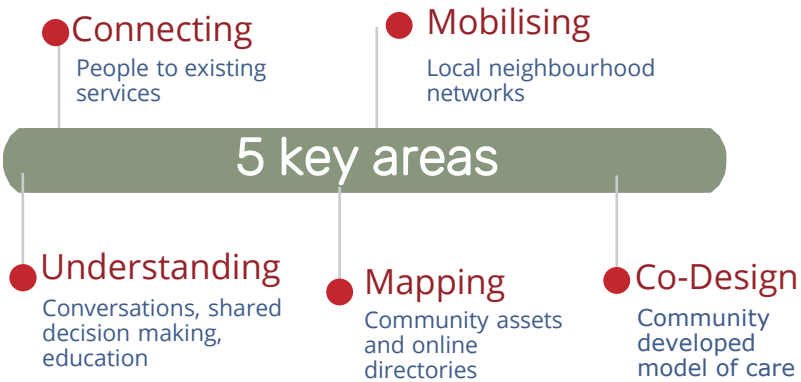
## Primary Health Care

Primary Health care is usually a person’s first encounter within the health system when they have a problem, it includes a range of services such as General Practice, Pharmacy and Allied Health. It focusses on overall general care for the person’s education and wellness, and community participation plays an important role in fostering and strengthening the delivery of health and wellness care.

With an asset-based approach and focusing on the existing community resources to promote a person’s confidence and coping abilities, primary health care offers the potential to provide better health care experiences and outcomes for individuals and communities.

## Assets

- 1 ● Health Workforce
- 2 ● Community Organisations
- 3 ● Neighbourhood Networks
- 4 ● Local Government



## Community Focus



*Continuing to evolve and grow with the community*



Providing Health & Wellbeing Solutions

## Working Together for Better Health, Katanning

### Stakeholder Update - January 2021

Amity Health has been working with the Katanning community to identify existing strengths and resources to inform the Working Together for Better Health, Katanning project, supported by commissioning partner WA Primary Health Alliance.

By harnessing skills and expertise of local health professionals we have been able to build on and continue to:

- Consolidate working relationships with WA Country Health Service, Population Health Unit
- Engage with General Practice, Local Government and the DHAC around an asset-based approach to health care and the benefits
- Support General Practice in streamlining referral pathways for Diabetes Education
- Co-design a service brochure and pathway with WA Country Health Service for Diabetes Education
- Ensure a coordinated approach to Amity Health services being delivered in Katanning
- Work collaboratively with WAPHA Compassionate Communities Katanning project team to empower people and their community

More recently, there has been an identified need to clarify and document referral pathways and eligibility for Podiatry services.

In the coming months, Amity Health aims to define the Podiatry pathway by:

- Examining the current referral process
- Working closely with General Practice and WA Country Health Service to clarify referral streams and eligibility
- Developing a clear pathway to improve service referrals

The Working Together for Better Health, Katanning project is continuing to grow and evolve with the community and work with the assets already in place. By fostering relationships, new and old, and collaborating across organisations it enhances a person's healthcare experience and provides vital care in their location of choice.

*For more information contact:*

Amity Health 136 Lockyer Avenue Albany WA 6330  
[www.amityhealth.com.au](http://www.amityhealth.com.au) t: 9842 2797 e: [sreid@amityhealth.com.au](mailto:sreid@amityhealth.com.au)